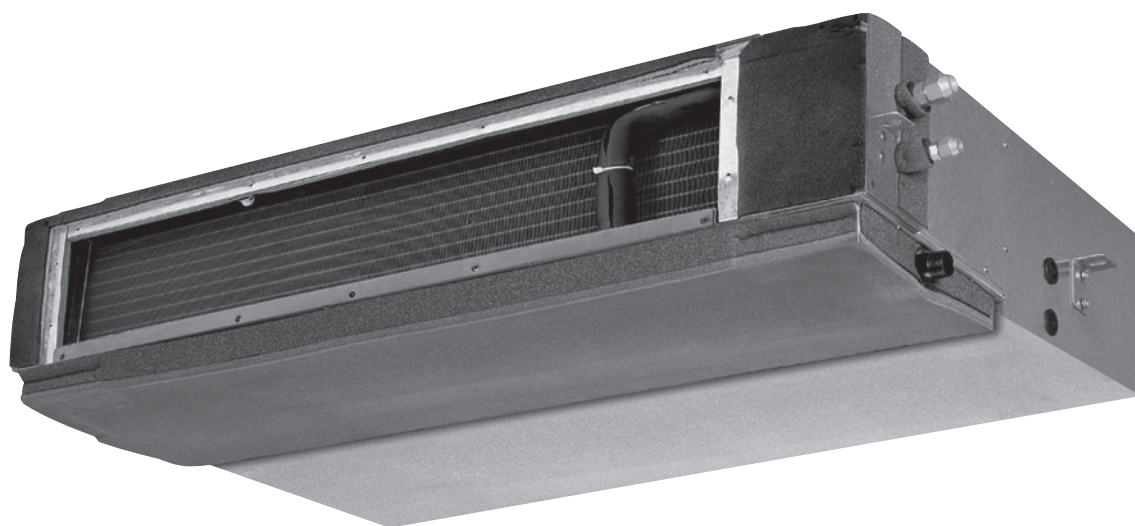


Ultra Duct

YUHA 18 to 48 FSAAF

SERVICE MANUAL



YUHA 18 FS · YUHA 24 FS
YUHA 36 FS · YUHA 48 FS



SM-YUHA-18-48FS-GB 08-08

How to read the model?

Y U H A 24 F S A* A A F**

Range:

- F = Floor standing
- H = High wall
- M = Master range
- P = Portable
- Y = YORK
- R = Everest front

Generation:

- A = First
- R = New remote
- F = Second generation

Voltages:

- A = (Out) 220-240/1/50 - (In) 220-240/1/50
- C = (Out) 380/3/50 - (In) 220-240/1/50

Family:

- A = Efficiency Ultra
- E = Eco Ultra
- H = Alps
- J = Atlas
- K = Cassette
- L = Ultra
- M = Multi Ultra
- R = Multi Inverter
- V = Inverter Ultra
- U = Ducted unit
- O = Floor / Ceiling

Indoor options:

- A = Standard
- J = Bio Screen filter
- ** Omit for outdoor units

Outdoor options:

- A = Standard
- B = Low Ambient Kit
- C = Power outdoor
- * Omit for indoor units

Type:

- C = Set - Cooling only
- D = Outdoor - Cooling only
- E = Indoor - Cooling only
- H = Set - Heat pump
- J = Outdoor Heat pump
- K = Indoor Heat pump
- M = Multi Ultra
- R = Multi Inverter
- V = Inverter Ultra
- U = Ducted unit
- O = Floor / Ceiling

Indoors:

- A = Free matching multi
- S = Single
- T = Duct High Static
- U = Duct standard case

Compressor type:

- A = AC Inverter
- D = DC Inverter
- F = Fixed
- M = Multi

Refrigerant type:

- A = R22
- B = R407C
- C = R410A

Capacity Btu/h

Ultra Duct

1. Features
2. Specification
3. Dimensions
4. Piping Diagrams
5. Wiring Diagrams
6. Capacity Tables
7. Fan performance
8. Air Velocity and Temperature Distributions (Reference Data)
9. Electric Characteristics
10. Sound Levels

1. Features

(1) Normal body

) . Economic and convenient installation

- Several diffusers branch off from an indoor unit, adjusting the room temperature, which makes many rooms to be air-conditioned with only one indoor unit.
- All models feature thin design making them applicable to ceiling pocket that tends to be shallow
- Thinner body than the former, 298mm height is easier for installation and saving space.



* . A wild variety of optional accessories

- Including front clapboard, panel, canvas air passage, filter, etc.



Canvas air passage



Clapboard



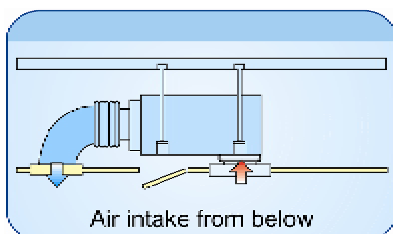
Panel

+ . A long-life and high-efficiency filter

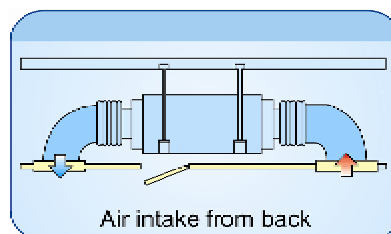


, . Way of air intake and inserting air filter

- Air intake can be positioned either at the back or below the unit. Similarly, the air filter also can be inserted either from the back or from the bottom of the unit.



Air intake from below



Air intake from back

2. Specification

Model			YUHA 18 FS	YUHA 24 FS
Power supply		Ph-V-Hz	1,220-240V,50Hz	1,220-240V,50Hz
Cooling	Capacity	Btu/h	18,000	24,000
	Capacity	kW	5.4	7.1
	Input	W	1900	2510
	Rated current	A	8.8	12.2
	EER	Btu/w.h	9.7	9.7
Heating	Capacity	Btu/h	20,500	27,300
	Capacity	kW	6	8
	Input	W	1900	2500
	Rated current	A	8.8	11.0
	COP	Btu/w.h	10.8	10.9
Moisture Removal		l/h	1.8	2.4
Max. input consumption		W	2300	3300
Max. input current		A	11.7	15.3
Starting current		A	36.8	61
Compressor	Model		PH330X2CS-8	THU33WC6-U
	Type		ROTARY	ROTARY
	Brand		MIDEA-TOSHIBA	Hitachi
	Supplier		MIDEA-TOSHIBA	Hitachi(shanghai)
	Capacity	Btu/h	18834	28490
	Input	W	1870	2650
	Rated current (RLA)	A	8.75	12.6
	Locked rotor Amp (LRA)	A	36.8	62
	Thermal protector		INNER	INNER
	Capacitor	uF	50/370 μ F/V	60 μ F/400V(220V)
	Refrigerant oil	ml	ESTER OIL VG74 750	SUNISO-4GSI 1050
Indoor fan motor	Model		YSK55-4D	YSK74 -4C
	Input	W	117/110/101	170/150/133
	Capacitor	uF	3.0uF/450V	6.5uF/450V
	Speed (hi/mid/lo)	r/min	900 /800 /690	1100/1020/900
Indoor coil	Number of rows		2	3
	Tube pitch(a)x row pitch(b)	mm	25.4×22	25.4×22
	Fin spacing	mm	1.7	1.7
	Fin type		Hydrophilic aluminium	Hydrophilic aluminium
	Tube outer dia. and type	mm	Ø9.53, innergroove tube	Ø9.53,innergroove tube
	Coil length x height x width	mm	800×254×44	800×254×66
	Number of circuits		3	3
Indoor air flow (H/M/L)		m ³ /h	1250/1160/1000	1460/1360/1150

Indoor external static pressure (Hi)		Pa	40	40
Indoor noise level (Hi/Mid/Lo)		dB(A)	45/41/38	49/45/42
Indoor unit	Dimension (W*H*D)	mm	1000×298×800	1000×298×800
	Packing (W*H*D)	mm	1205×370×940	1205×370×940
	Net/Gross weight	kg	36/43	38/45
Outdoor fan motor	Model		YSK55-4L	YSK55-4L
	Input	W	110/104/98	110/104/98
	Capacitor	uF	2.5uF/450V	2.5uF/450V
	Speed	r/min	1280/1190/1000	1280/1190/1000
Outdoor coil	Number of rows		3	3
	Tube pitch(a)x row pitch(b)	mm	25.4×22	25.4×22
	Fin spacing	mm	1.7	1.7
	Fin type		Hydrophilic aluminium	Hydrophilic aluminium
	Tube outer dia.and type	mm	Ø9.53,innergroove tube	Ø9.53,innergroove tube
	Coil length x height x width	mm	775×660×44	770×810×44
	Number of circuits		3	2
Outdoor air flow		m ³ /h	2400	3000
Outdoor noise level		dB(A)	48	52
Outdoor unit	Dimension (W*H*D)	mm	845×695×335	895×860×330
	Packing (W*H*D)	mm	970X770X395	1043X915X395
	Net/ Gross weight	kg	53/57	64/66
Refrigerant type/Quantity		g	R22/1850	R22/2600
Design pressure (high side/low side)		MPa	2.8/1.2	2.8/1.2
Refrigerant piping	Liquid side	mm(inch)	Ø 6.35 (1/4)	Ø 9.53 (3/8)
	Gas side	mm(inch)	Ø 12.7 (1/2)	Ø 16 (5/8)
	Max. pipe length	m	20	20
	Max. difference in level	m	10	10
Operation temp		°C	17~30	17~30
Ambient temp		°C	-7~45	-7~45
Application area		m ²	34~49	40~56
Qty'per 20' /40' /40'HQ		set	38/78/90	34/68/80

Notes:

- Nominal cooling capacities are based on the following conditions:
Indoor temp: 27°CDB, 19°CWB; Outdoor temp: 35°CDB; Equivalent ref. piping: 7.5m (horizontal)
- Nominal heating capacities are based on the following conditions:
Indoor temp: 20°CDB; Outdoor temp: 7°CDB, 6°CWB; Equivalent ref. Piping: 7.5m(horizontal)
- Actual noise level may differ, depending on the room structure, etc, since these noise values are from an anechoic room.

Model		YUHA 36 FS	YUHA 36 FS	YUHA 48 FS
Power supply		Ph-V-Hz	1,220-240V,51Hz	3,380V,50Hz
Cooling	Capacity	Btu/h	36,000	36,000
	Capacity	kW	10.5	10.5
	Input	W	3700	3700
	Rated current	A	21	6.5
	EER	Btu/w.h	9.7	9.7
Heating	Capacity	Btu/h	39,000	39,000
	Capacity	kW	11.4	11.4
	Input	W	3350	3350
	Rated current	A	20.5	5.8
	COP	Btu/w.h	11.6	11.6
Moisture Removal		l/h	3.6	3.6
Max. input consumption		W	4620	4620
Max. input current		A	29	8.5
Starting current		A	75	45
Compressor	Model		ZR47K3-PFJ-522	C-SB303H8A
	Type		SCROLL	SCROLL
	Brand		Copeland	Sanyo
	Supplier		Copeland(Suzhou)	Sanyo(dalian)
	Capacity	Btu/h	40262	40262
	Input	W	3650	3650
	Rated current (RLA)	A	6.5	6.5
	Locked rotor Amp (LRA)	A	42	42
	Thermal protector		INNER	INNER
	Capacitor	uF	/	/
	Refrigerant oil	ml	SONTEX200LT 1242	3GS 1360
Indoor fan motor	Model		YSK59-4A	YSK59-4A
	Input	W	118/108/101	118/108/101
	Capacitor	uF	2.5uF/450V	2.5uF/450V
	Speed (hi/mid/lo)	r/min	820/680/620	820/680/620
Indoor coil	Number of rows		3	3
	Tube pitch(a)x row pitch(b)	mm	25.4×22	25.4×22
	Fin spacing	mm	1.7	1.7
	Fin type		Hydrophilic aluminium	Hydrophilic aluminium
	Tube outer dia. and type	mm	Φ9.53 innergroove tube	Φ9.53 innergroove tube
	Coil length x height x width	mm	1150×254×44	1150×254×44
	Number of circuits		4	4
Indoor air flow (Hi/Mid/Lo)		m ³ /h	2070/1950/1860	2070/1950/1860
			2400/2300/2200	

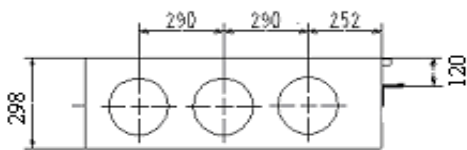
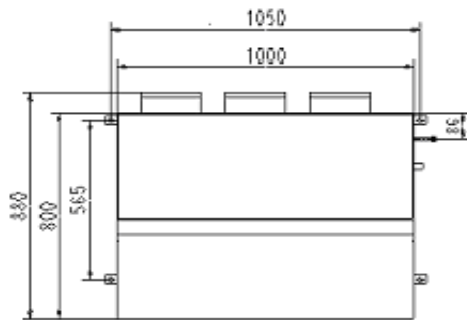
Indoor external static pressure (Hi)		Pa	70	70	70
Indoor noise level (Hi/Mid/Lo)		dB(A)	49/47/44	49/47/44	51/47/44
Indoor unit	Dimension (W*H*D)	mm	1350×298×800	1350×298×800	1350×298×800
	Packing (W*H*D)	mm	1555×370×940	1555×370×940	1555×370×940
	Net/Gross weight	kg	48/57	48/57	50/59
Outdoor fan motor	Model		YDK250-6D	YDK250-6D	YDK250-6D
	Input	W	296	296	296
	Capacitor	uF	10 uF/450V	10 uF/450V	10 uF/450V
	Speed	r/min	750	750	750
Outdoor coil	Number of rows		2	2	2
	Tube pitch(a)x row pitch(b)	mm	25.4×22	25.4X22	25.4X22
	Fin spacing	mm	1.7	1.3	1.3
	Fin type		Unhydrophilic aluminium	Unhydrophilic aluminium	Unhydrophilic aluminium
	Tube outer dia.and type	mm	Ø9.53, inner groove tube	Ø9.53, innergroove tube	Ø9.53, innergroove tube
	Coil lengthxheight x width	mm	988X914X44	988X914X44	988X914X44
	Number of circuits		4	4	4
Outdoor air flow		m ³ /h	5000	5000	5000
Outdoor noise level		dB(A)	57	55	55
Outdoor unit	Dimension (W*H*D)	mm	990X960X360	990X960X360	990X960X360
	Packing (W*H*D)	mm	1120X1090X435	1120X1090X435	1120X1090X435
	Net/ Gross weight	kg	100/106	100/106	100/106
Refrigerant type/Quantity		g	R22/3100	R22/3100	R22/3100
Design pressure (high side/low side)		MPa	2.8/1.2	2.8/1.2	2.8/1.2
Refrigerant piping	Liquid side	mm(inch)	12.7 (1/2)	12.7 (1/2)	12.7 (1/3)
	Gas side	mm(inch)	19 (3/4)	19 (3/4)	19 (3/4)
	Max. pipe length	m	25	25	25
	Max. difference in level	m	10	10	10
Operation temp		°C	17~30	17~30	17~30
Ambient temp		°C	-7~45	-7~45	-7~45
Application area		m ²	60~85	60~85	80~105
Qty'per 20' /40' /40'HQ		set	24/50/56	24/50/56	24/50/56

Notes:

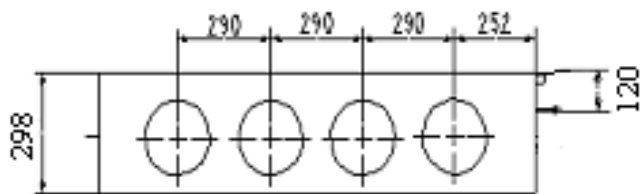
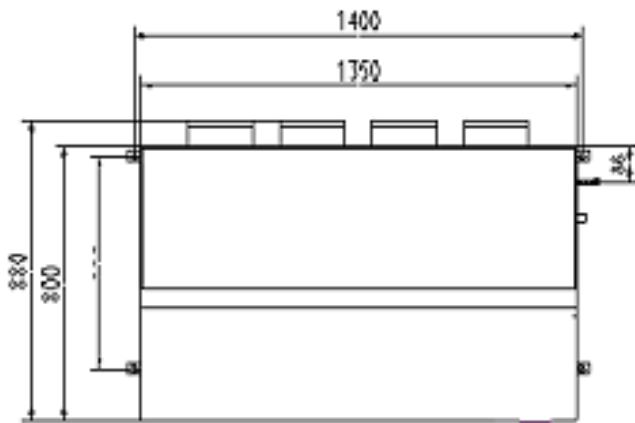
- Nominal cooling capacities are based on the following conditions:
Indoor temp: 27°CDB, 19°CWB; Outdoor temp: 35°CDB; Equivalent ref. piping: 7.5m (horizontal)
- Nominal heating capacities are based on the following conditions:
Indoor temp: 20°CDB; Outdoor temp: 7°CDB, 6°CWB; Equivalent ref. piping: 7.5m (horizontal)
- Actual noise level may differ, depending on the room structure, etc, since these noise values are from an anechoic room.

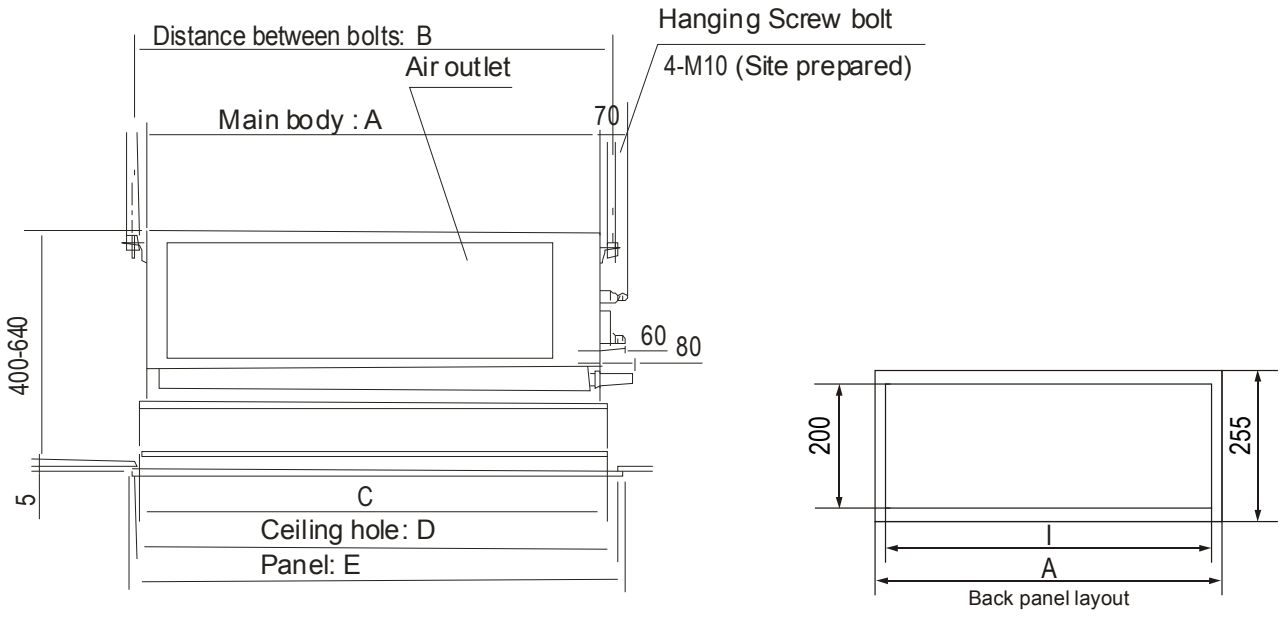
3. Dimensions

YUHA 18 FS · YUHA 24 FS



YUHA 36 FS · YUHA 48 FS



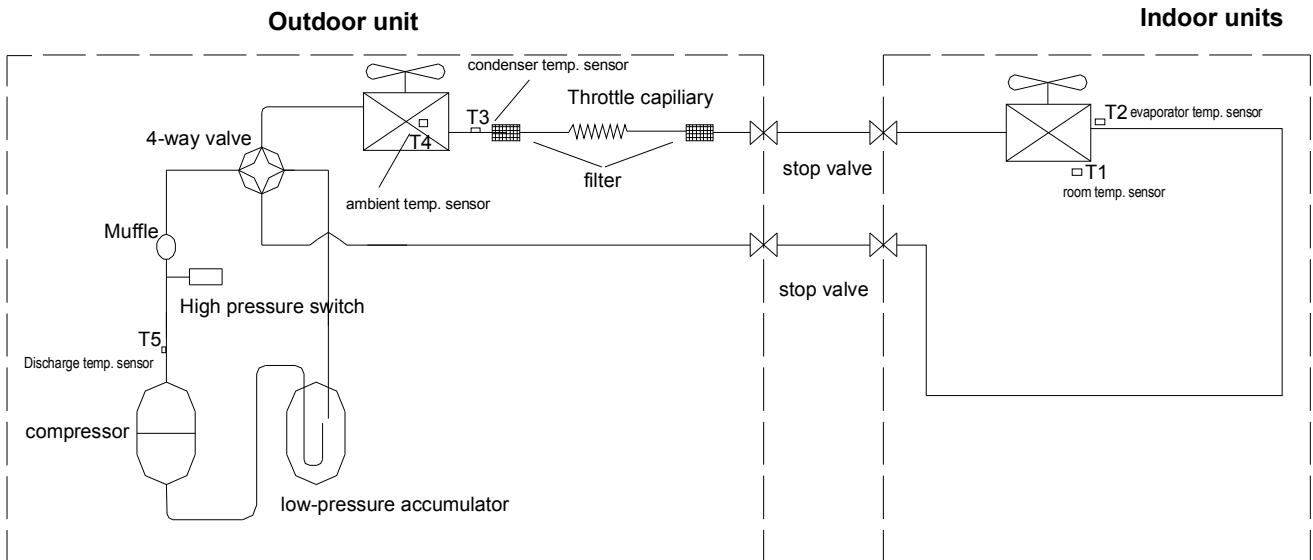


In case of air return from back, please refer to the above on the right.

Model	A	B	C	D	E	F	G	H	I	J	K	L	M	m	n
18,000 ~ 24,000	1000	1052	1112	1085	1470	19	9.53	252	968	580	290	430		2	
	1000	1052	1112	1085	1470	19	9.53		968			430			
36,000 ~ 48,000	1350	1400	1380	1400	1430	19	9.53	252	1318	930	310	430		3	4
	1350	1400	1380	1400	1430	19	9.53		1318			430			

4. Piping Diagrams

Heat pump

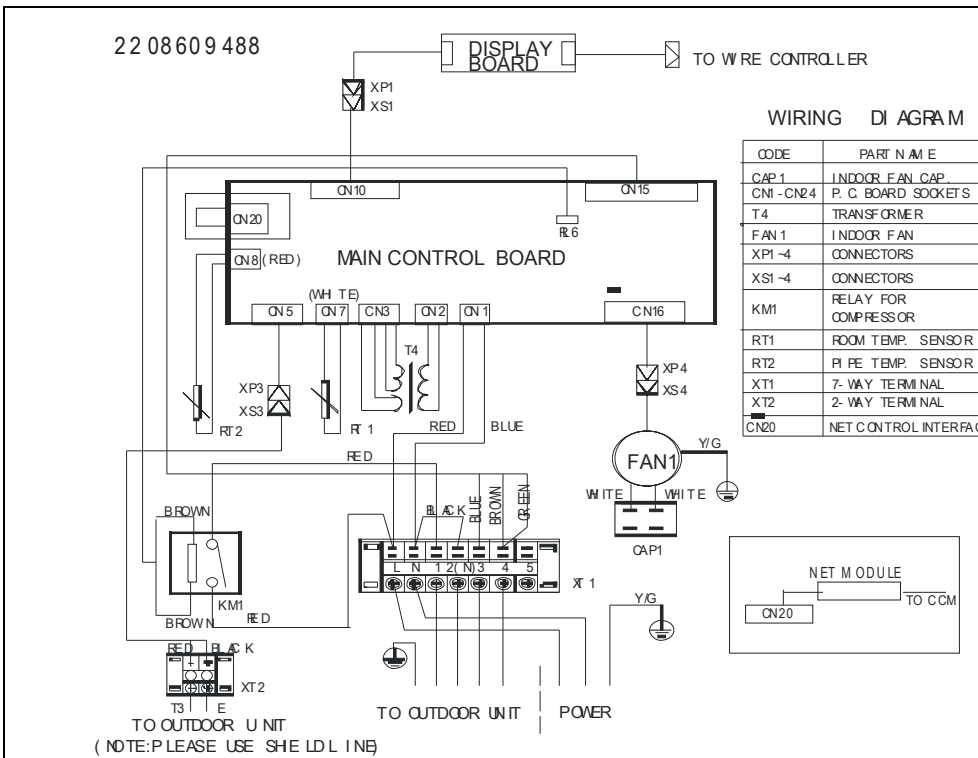


Remark:

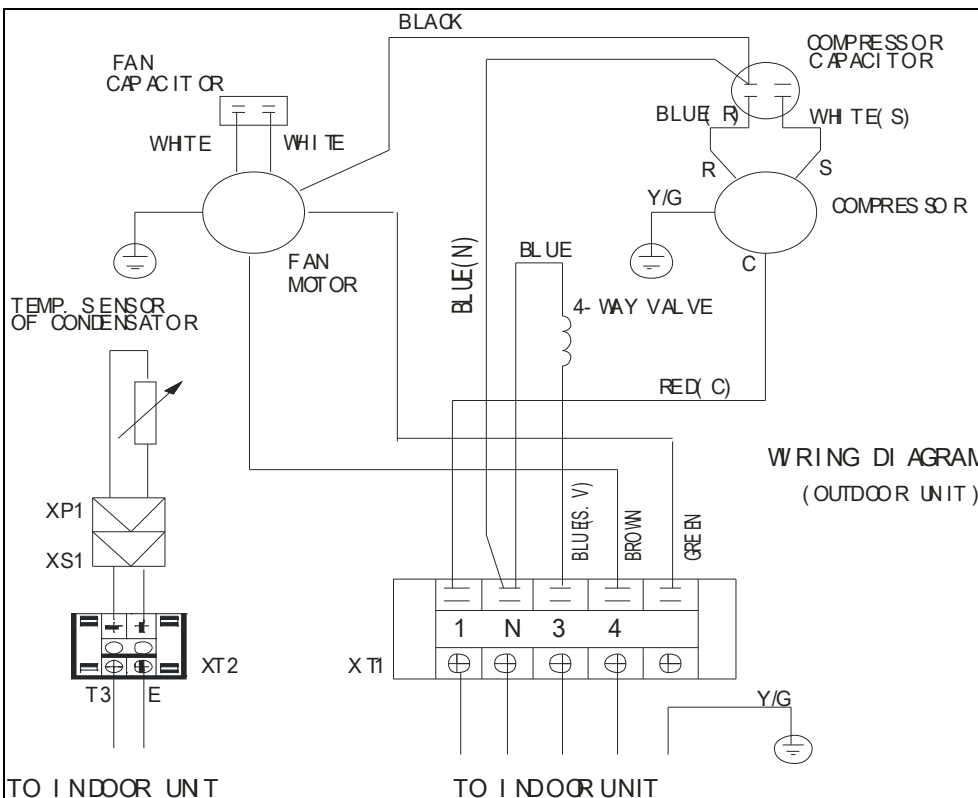
1. For YUJA 18FS, accumulator is not included.
2. For YUJA 36FS and YUJA 48FS, check valve and auxiliary capillary is not included.

5. Wiring Diagrams

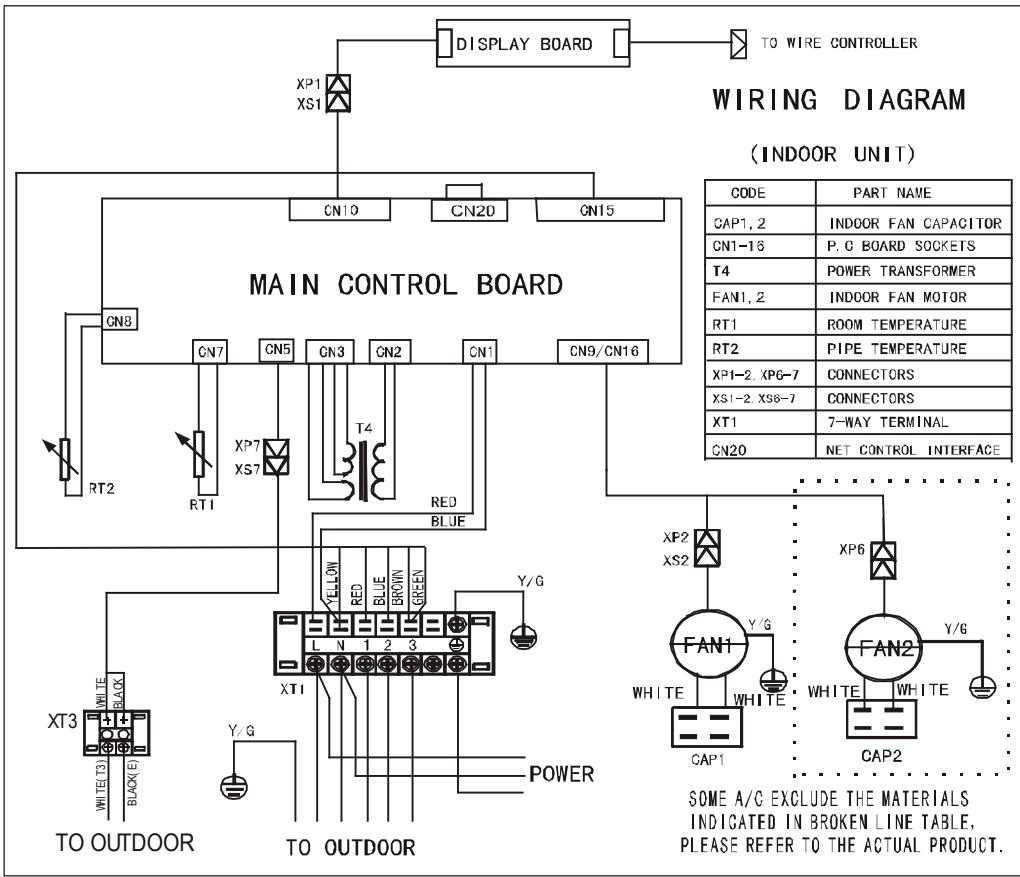
YUHA 18 FS Indoor unit



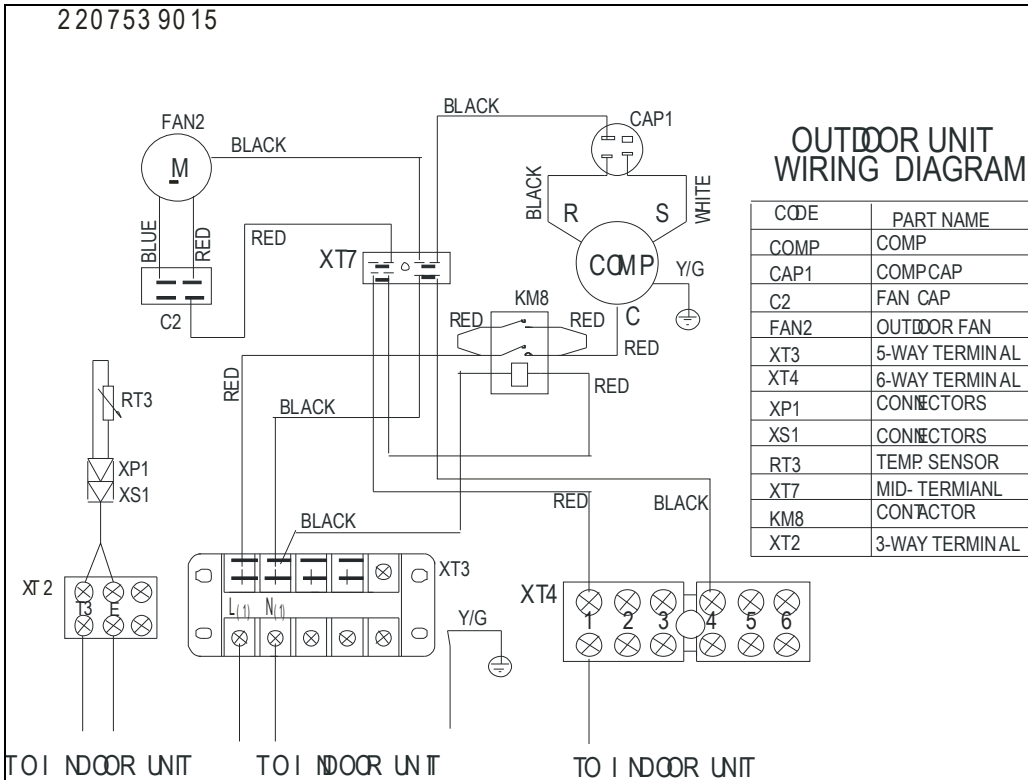
Outdoor unit:



YUHA 24 FS
Indoor unit:

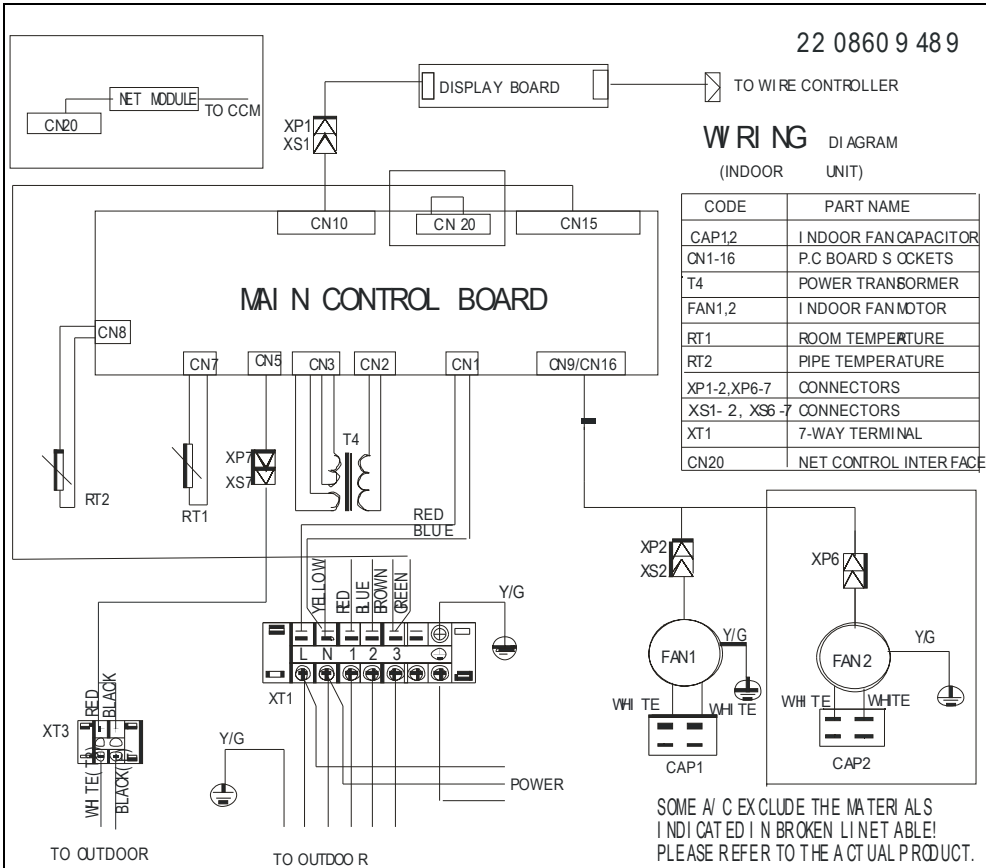


Outdoor unit

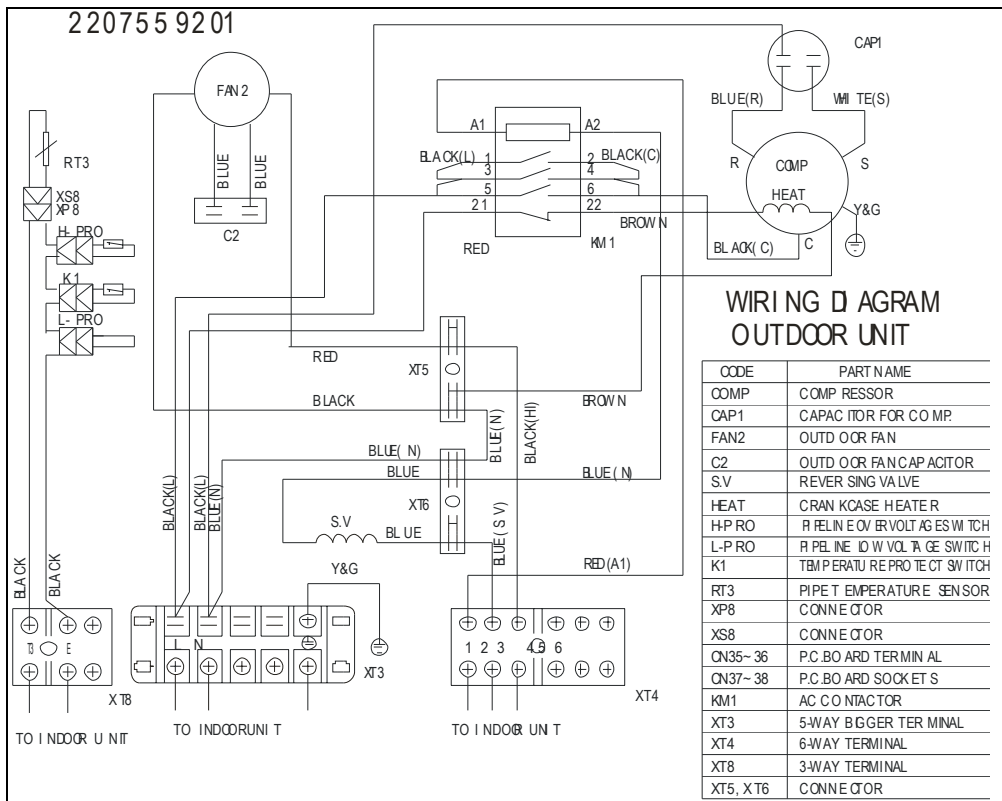


YUHA 36 FS (1 phase)

Indoor unit:

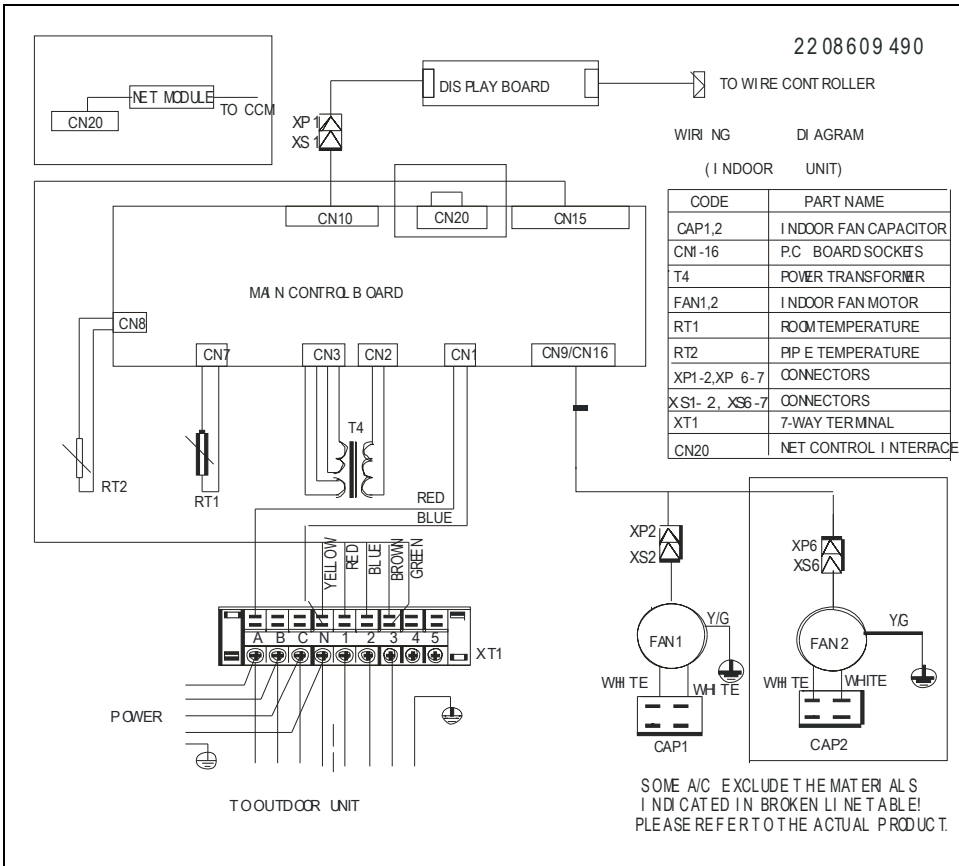


Outdoor unit:

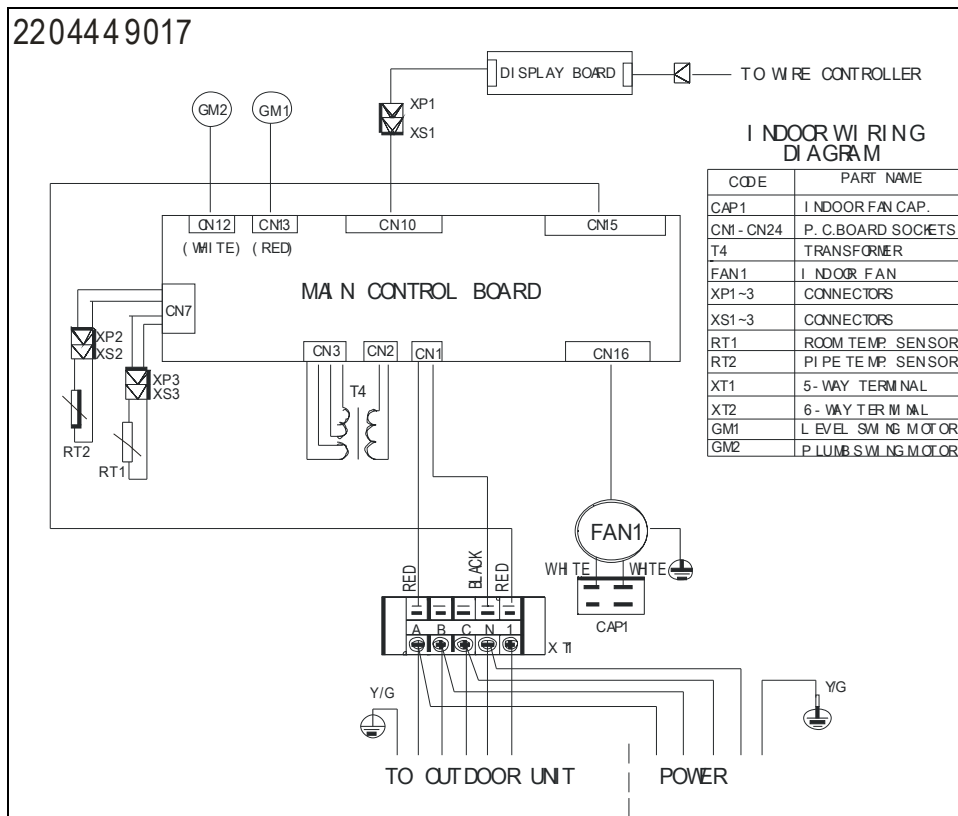


YUHA 36 FS (3 phase)

Indoor unit:

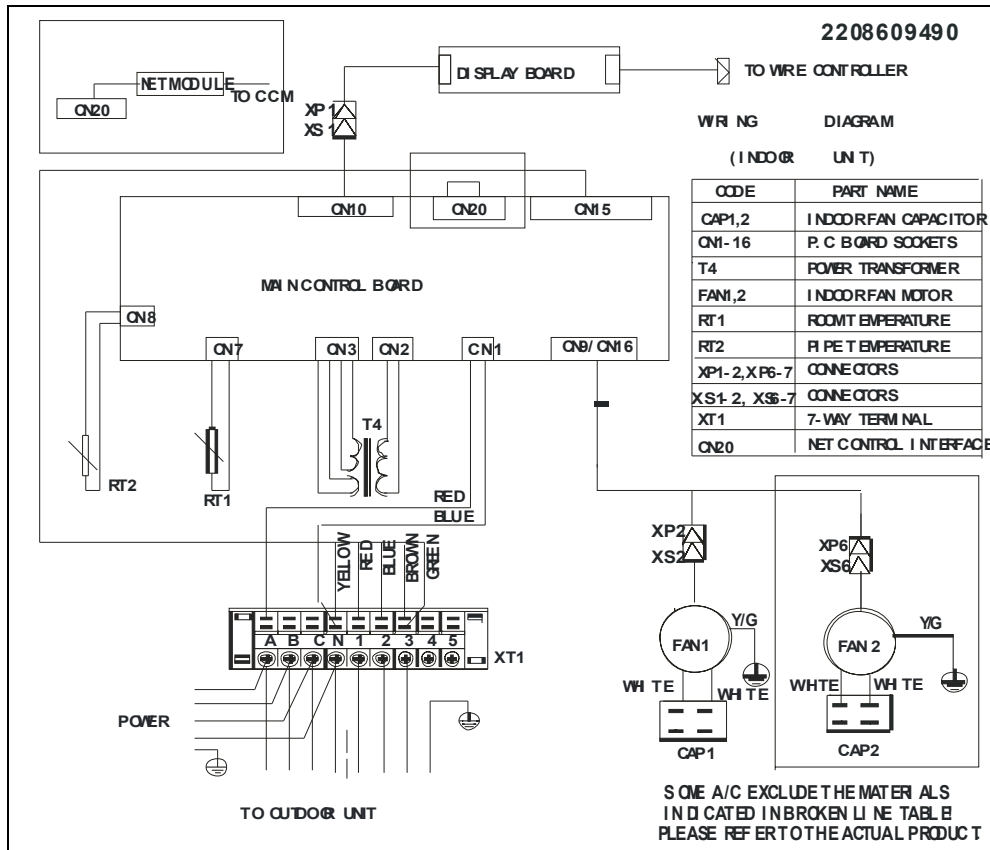


Outdoor unit:

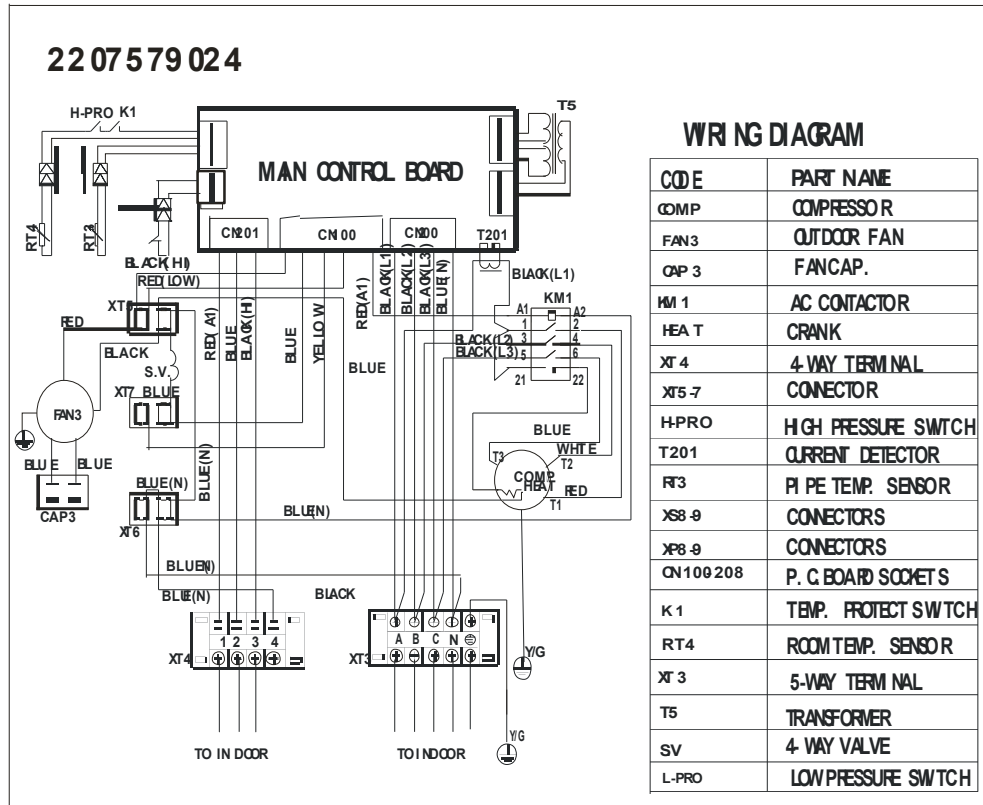


YUHA 48 FS

Indoor unit:



Outdoor unit:



6. Capacity Tables

Model: YUHA 18 FS

COOLING		OUTDOOR TEMPERATURE DRY					
Indoor Conditions		21°C	25°C	30°C	35°C	40°C	45°C
21°C D 15°C W	Total capacity kW	5.10	4.88	4.70	4.44	4.26	4.12
	Sensitive capacity kW	4.08	3.90	3.76	3.55	3.41	3.30
	Input kW.	1.39	1.58	1.78	1.98	2.18	2.38
24°C D 17°C W	Total capacity kW	5.59	5.34	5.15	4.86	4.66	4.52
	Sensitive capacity kW	4.47	4.27	4.12	3.89	3.73	3.61
	Input kW.	1.46	1.67	1.88	2.09	2.30	2.51
27°C D 19°C W	Total capacity kW	6.07	5.81	5.60	5.28	5.07	4.91
	Sensitive capacity kW	4.86	4.65	4.48	4.22	4.06	3.93
	Input kW.	1.54	1.76	1.98	2.20	2.42	2.64
32°C D 23°C W	Total capacity kW	6.98	6.68	6.44	6.07	5.83	5.65
	Sensitive capacity kW	5.59	5.34	5.15	4.86	4.66	4.52
	Input kW.	1.77	2.02	2.28	2.53	2.78	3.04

HEATING		OUTDOOR CONDITIONS							
Indoor Conditions		24°C D	12°C D	7°C D	4°C D	0°C D	-5°C D	-7°C D	-15°C D
		18°C W	11°C W	6°C W	3°C W	-1°C W	-6°C W	-8°C W	-16°C W
15°C	Capacity kW	10.61	8.49	7.07	6.37	6.01	5.30	4.95	4.60
	Input kW.	3.45	2.76	2.30	2.19	2.07	1.96	1.84	1.61
18°C	Capacity kW	9.96	7.97	6.64	5.98	5.65	4.98	4.65	4.32
	Input kW.	3.24	2.59	2.16	2.05	1.94	1.84	1.73	1.51
20°C	Capacity kW	9.23	7.38	6.15	5.54	5.23	4.61	4.31	4.00
	Input kW.	3.00	2.40	2.00	1.90	1.80	1.70	1.60	1.40
22°C	Capacity kW	8.49	6.79	5.66	5.09	4.81	4.24	3.96	3.68
	Input kW.	2.76	2.21	1.84	1.75	1.66	1.56	1.47	1.29
27°C	Capacity kW	7.38	5.90	4.92	4.43	4.18	3.69	3.44	3.20
	Input kW.	2.40	1.92	1.60	1.52	1.44	1.36	1.28	1.12

Model: YUHA 24 FS

COOLING		OUTDOOR TEMPERATURE DRY					
Indoor Conditions		21°C	25°C	30°C	35°C	40°C	45°C
21°C D 15°C W	Total capacity kW	6.79	6.50	6.26	5.91	5.67	5.49
	Sensitive capacity kW	5.43	5.20	5.01	4.72	4.54	4.39
	Input kW.	1.85	2.11	2.37	2.64	2.90	3.16
24°C D 17°C W	Total capacity kW	7.44	7.11	6.86	6.47	6.21	6.01
	Sensitive capacity kW	5.95	5.69	5.48	5.17	4.97	4.81
	Input kW.	1.95	2.23	2.51	2.78	3.06	3.34
27°C D 19°C W	Total capacity kW	8.08	7.73	7.45	7.03	6.75	6.54
	Sensitive capacity kW	6.47	6.19	5.96	5.62	5.40	5.23
	Input kW.	2.05	2.34	2.64	2.93	3.22	3.52
32°C D 23°C W	Total capacity kW	9.30	8.89	8.57	8.08	7.76	7.52
	Sensitive capacity kW	7.44	7.11	6.86	6.47	6.21	6.01
	Input kW.	2.36	2.70	3.03	3.37	3.71	4.04

HEATING		OUTDOOR CONDITIONS							
Indoor Conditions		24°C D	12°C D	7°C D	4°C D	0°C D	-5°C D	-7°C D	-15°C D
		18°C W	11°C W	6°C W	3°C W	-1°C W	-6°C W	-8°C W	-16°C W
15°C	Capacity kW	13.96	11.16	9.30	8.37	7.91	6.98	6.51	6.05
	Input kW.	5.26	4.21	3.51	3.33	3.16	2.98	2.81	2.46
18°C	Capacity kW	13.11	10.48	8.74	7.86	7.43	6.55	6.12	5.68
	Input kW.	4.94	3.95	3.29	3.13	2.96	2.80	2.64	2.31
20°C	Capacity kW	12.14	9.71	8.09	7.28	6.88	6.07	5.66	5.26
	Input kW.	4.58	3.66	3.05	2.90	2.75	2.59	2.44	2.14
22°C	Capacity kW	11.16	8.93	7.44	6.70	6.33	5.58	5.21	4.84
	Input kW.	4.21	3.37	2.81	2.67	2.53	2.39	2.24	1.96
27°C	Capacity kW	9.71	7.77	6.47	5.82	5.50	4.85	4.53	4.21
	Input kW.	3.66	2.93	2.44	2.32	2.20	2.07	1.95	1.71

Model: YUHA 36 FS

COOLING		OUTDOOR TEMPERATURE DRY					
Indoor Conditions		21°C	25°C	30°C	35°C	40°C	45°C
21°C D 15°C W	Total capacity kW	10.19	9.75	9.39	8.86	8.51	8.24
	Sensitive capacity kW	8.15	7.80	7.51	7.09	6.81	6.59
	Input kW.	2.71	3.10	3.48	3.87	4.26	4.64
24°C D 17°C W	Total capacity kW	11.16	10.68	10.29	9.71	9.32	9.03
	Sensitive capacity kW	8.93	8.54	8.23	7.76	7.45	7.22
	Input kW.	2.86	3.27	3.68	4.09	4.49	4.90
27°C D 19°C W	Total capacity kW	12.13	11.61	11.18	10.55	10.13	9.81
	Sensitive capacity kW	9.71	9.28	8.95	8.44	8.10	7.85
	Input kW.	3.01	3.44	3.87	4.30	4.73	5.16
32°C D 23°C W	Total capacity kW	13.95	13.35	12.86	12.13	11.65	11.28
	Sensitive capacity kW	11.16	10.68	10.29	9.71	9.32	9.03
	Input kW.	3.46	3.96	4.45	4.95	5.44	5.93

HEATING		OUTDOOR CONDITIONS							
Indoor Conditions		24°C D	12°C D	7°C D	4°C D	0°C D	-5°C D	-7°C D	-15°C D
		18°C W	11°C W	6°C W	3°C W	-1°C W	-6°C W	-8°C W	-16°C W
15°C	Capacity kW	20.22	16.17	13.48	12.13	11.46	10.11	9.43	8.76
	Input kW.	7.94	6.35	5.29	5.03	4.76	4.50	4.23	3.70
18°C	Capacity kW	18.99	15.19	12.66	11.39	10.76	9.49	8.86	8.23
	Input kW.	7.45	5.96	4.97	4.72	4.47	4.22	3.97	3.48
20°C	Capacity kW	17.58	14.06	11.72	10.55	9.96	8.79	8.20	7.62
	Input kW.	6.90	5.52	4.60	4.37	4.14	3.91	3.68	3.22
22°C	Capacity kW	16.17	12.94	10.78	9.70	9.17	8.09	7.55	7.01
	Input kW.	6.35	5.08	4.23	4.02	3.81	3.60	3.39	2.96
27°C	Capacity kW	14.06	11.25	9.38	8.44	7.97	7.03	6.56	6.09
	Input kW.	5.52	4.42	3.68	3.50	3.31	3.13	2.94	2.58

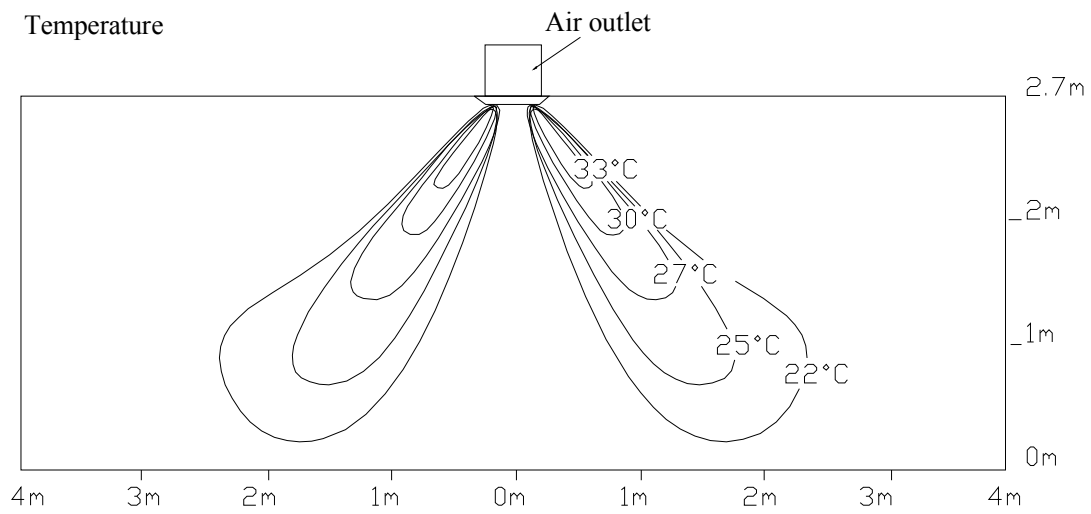
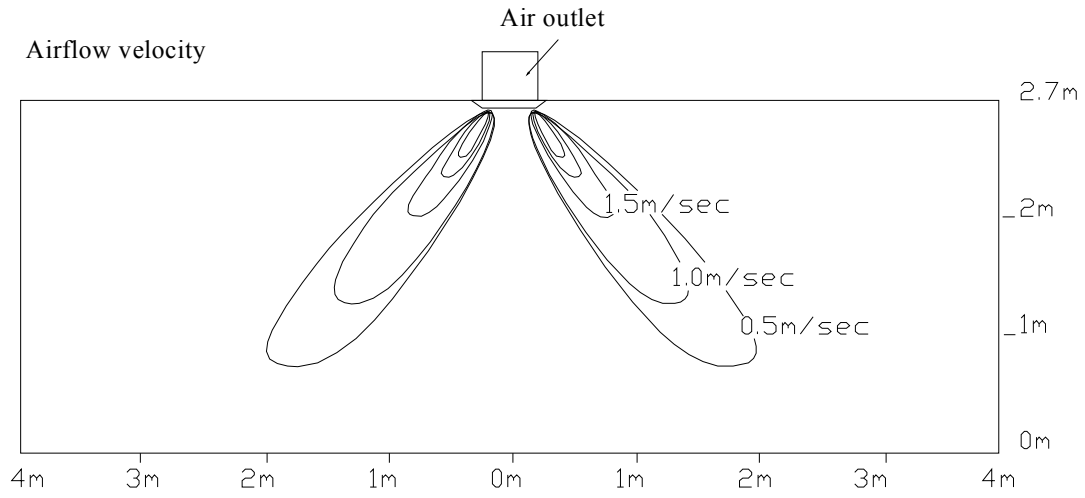
Model: YUHA 48 FS

COOLING		OUTDOOR TEMPERATURE DRY					
Indoor Conditions		21°C	25°C	30°C	35°C	40°C	45°C
21°C D 15°C W	Total capacity kW	13.59	13.00	12.53	11.82	11.35	10.99
	Sensitive capacity kW	10.87	10.40	10.02	9.46	9.08	8.79
	Input kW.	3.40	3.89	4.37	4.86	5.35	5.83
24°C D 17°C W	Total capacity kW	14.89	14.24	13.72	12.94	12.43	12.04
	Sensitive capacity kW	11.91	11.39	10.98	10.36	9.94	9.63
	Input kW.	3.59	4.10	4.62	5.13	5.64	6.16
27°C D 19°C W	Total capacity kW	16.18	15.48	14.91	14.07	13.51	13.09
	Sensitive capacity kW	12.94	12.38	11.93	11.26	10.81	10.47
	Input kW.	3.78	4.32	4.86	5.40	5.94	6.48
32°C D 23°C W	Total capacity kW	18.61	17.80	17.15	16.18	15.53	15.05
	Sensitive capacity kW	14.89	14.24	13.72	12.94	12.43	12.04
	Input kW.	4.35	4.97	5.59	6.21	6.83	7.45

HEATING		OUTDOOR CONDITIONS							
Indoor Conditions		24°C D	12°C D	7°C D	4°C D	0°C D	-5°C D	-7°C D	-15°C D
		18°C W	11°C W	6°C W	3°C W	-1°C W	-6°C W	-8°C W	-16°C W
15°C	Capacity kW	26.79	21.43	17.86	16.07	15.18	13.39	12.50	11.61
	Input kW.	9.83	7.87	6.56	6.23	5.90	5.57	5.24	4.59
18°C	Capacity kW	25.16	20.13	16.77	15.10	14.26	12.58	11.74	10.90
	Input kW.	9.23	7.39	6.16	5.85	5.54	5.23	4.92	4.31
20°C	Capacity kW	23.30	18.64	15.53	13.98	13.20	11.65	10.87	10.09
	Input kW.	8.55	6.84	5.70	5.42	5.13	4.85	4.56	3.99
22°C	Capacity kW	21.43	17.15	14.29	12.86	12.14	10.72	10.00	9.29
	Input kW.	7.87	6.29	5.24	4.98	4.72	4.46	4.20	3.67
27°C	Capacity kW	18.64	14.91	12.42	11.18	10.56	9.32	8.70	8.08
	Input kW.	6.84	5.47	4.56	4.33	4.10	3.88	3.65	3.19

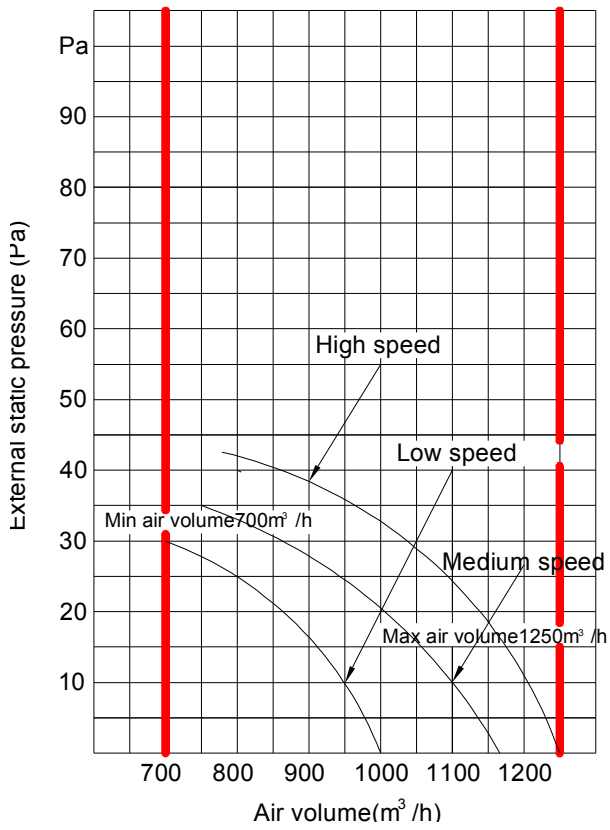
7. Air Velocity and Temperature Distributions (Reference Data)

Discharge angle 60°

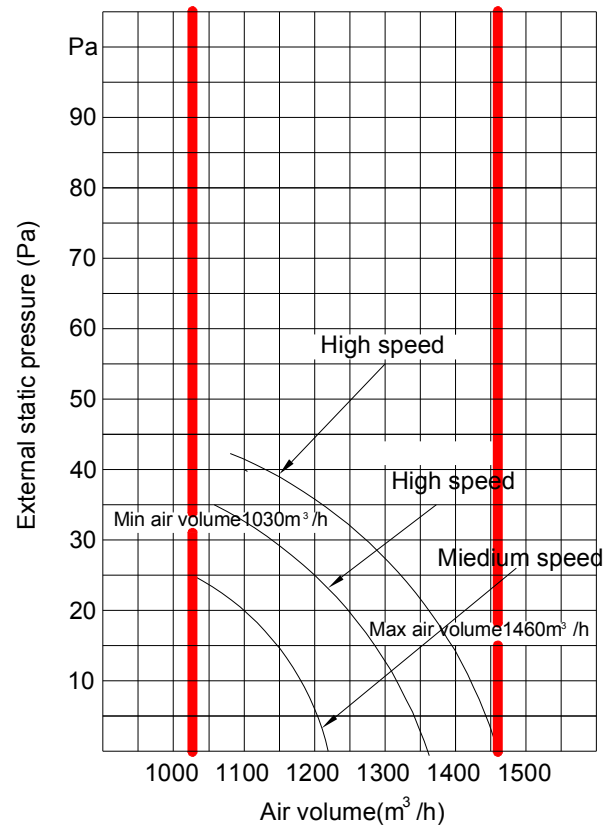


8. Fan performances

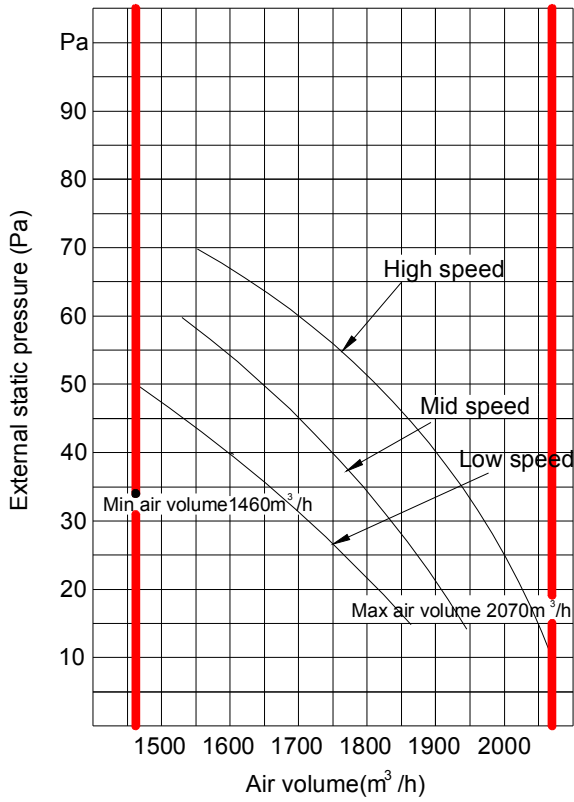
YUHA 18 FS



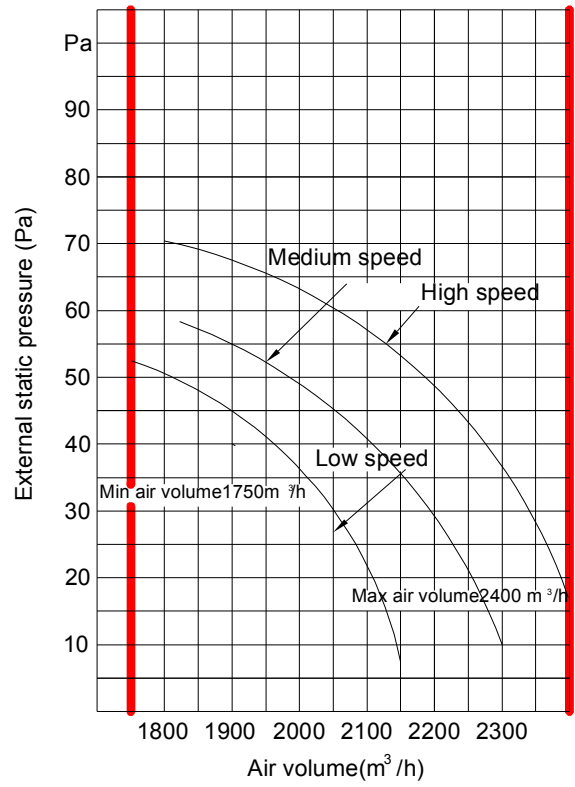
YUHA 24 FS



YUHA 36 FS



YUHA 48 FS



9. Electric Characteristics

Model	Indoor Units				Power Supply		Indoor fan motor		Power input(W)	
	Hz	Voltage	Min.	Max.	MCA	MFA	kW	FLA	Cooling	Heating
YUHA 18 FT	50	220~240	198	264	13.5	40	0.06	0.54	2100	2100
YUHA 24 FT					16.7	50	0.07	0.78	2510	2500
YUHA 36 FT					26.2	80	0.06	0.52	3700	3550
YUHA 36 FT		380	342	418	8.1	30	0.06	0.52	3700	3550
YUHA 48 FT					11.5	30	0.06	0.52	5400	5500

Symbols:

MCA: Min. Circuit Amps.

MFA: Max. Fuse Amps..

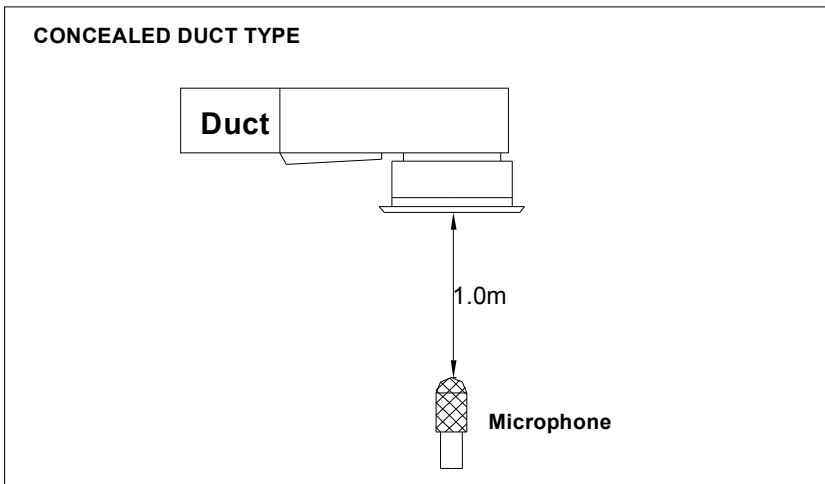
FLA: Full Load Amps.

Kw: Rate Motor Output

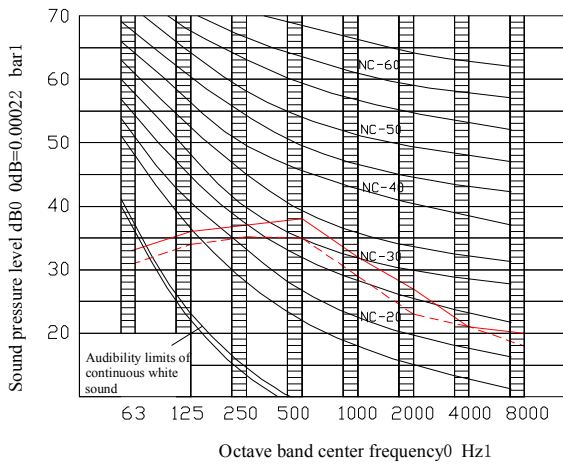
Notes:

7. Voltage range should not over the value of above table.
8. Maximum allowable voltage variation between phase is 2%
9. Selection wire size based on the larger value of MCA.
10. MCA/MFA
 $MCA = 1.25 \times FLA$
 $MFA \leq 4 \times FLA$
 (Next lower standard fuse rating min. 15A)
5. Instead of fuse, circuit breaker is also acceptable.

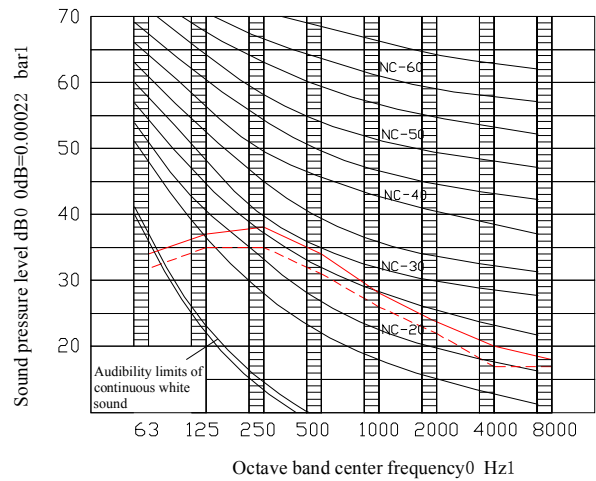
10. Sound Levels



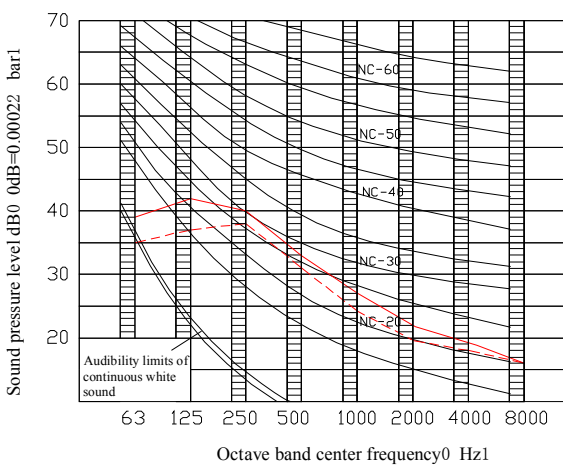
18,000 BTU/H



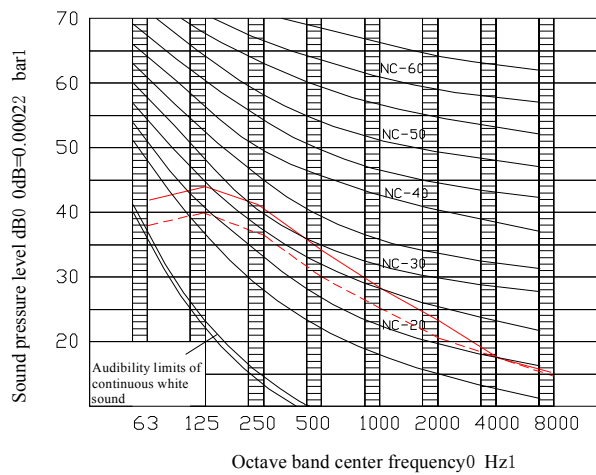
24,000 BTU/H



36,000 BTU/H



48,000 BTU/H





www.johnsoncontrols.com

SM-YUHA-18-48FS-GB 08-08